



3 Whitehall Court, Westminster  
London SW1A

GARTONJONES.COM



## 3 Whitehall Court, Westminster London, SW1A

### £900 Per Week

Well presented furnished 2 bedroom apartment set in one of London's most impressive residential blocks located between the River Thames and St James Park. Whitehall Court is a beautiful Grade II listed mansion block with past residents such as George Bernard Shaw, Oscar Wilde and James Compton Merryweather. The building benefits from a 24 hour porter, lift and has direct access to the Horse Guards Hotel, The Liberal Club and The Farmers Club (subject to membership). This accommodation offers high ceilings throughout and comprises of an open plan modern separate integrated kitchen, reception room with a feature fireplace, 2 double bedrooms with the master benefitting from an en-suite bathroom and further guest shower. Heating and Hot Water cost is included within the rent. Whitehall Court is ideally located for the transport links of Westminster, Embankment and Charing Cross rail and underground stations. Can be offered partly furnished if tenants required furniture to be removed

- Well Presented 2 Bedroom Apartment
- Stunning Mansion Block
- Reception Room With Feature Fireplace
- Modern Integrated Kitchen
- 2 Bathrooms
- Furnished
- Includes Heating and Hot Water
- 24 Hour Porter
- Access to Horse Guards Hotel
- Close To The Transport Links Of Westminster, Embankment and Charing Cross Stations

## GARTON JONES.COM

49 Marsham Street Lettings:

London

SW1P 3DP

+44 (0) 20 7340 0480

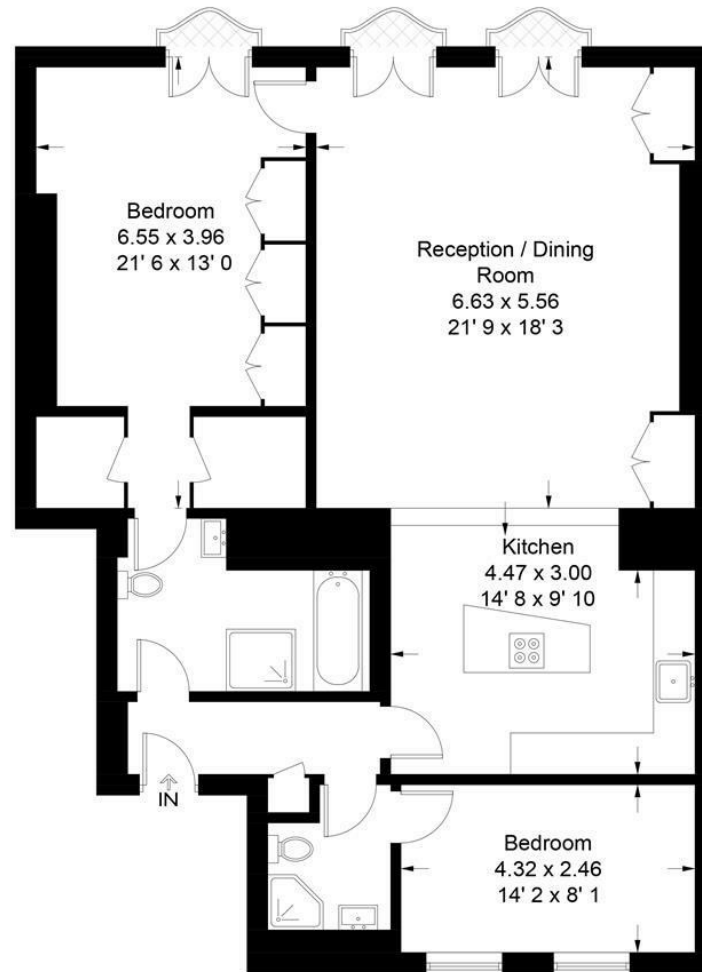
[westminster@gartonjones.com](mailto:westminster@gartonjones.com)

[www.gartonjones.com](http://www.gartonjones.com)



# Whitehall Court

Approximate Gross Internal Area = 1216 sq ft / 113 sq m



## Third Floor

Not to scale, for guidance only and must not be relied upon as a statement of fact  
All measurements and areas are approximate only and have been prepared in  
accordance with the current edition of the RICS Code of Measuring Practice



